

The logo for Visual TOM, consisting of the word "Visual" in white above "TOM" in white, both inside a blue rounded square.

Industrializes and  
Orchestrates easely  
all your operations

# Visual TOM, an integral tool, Cloud and Devops compliant

IT operations automation and orchestration with a single software platform guarantees central visibility of your IT operations and makes their execution securized and reliable. It improves reactivity and quality of service delivered by IT production department to its clients.

## THE BENEFITS OF A DEDICATED SOLUTION TO WORKLOAD AUTOMATION AND PROCESS ORCHESTRATION

- **Reduce your administration costs**, as the tool requires minimal human, hardware or software resources
- **Secure your IT operations** thanks to the unique and exclusive high availability "Visual TOM Backup Server" technology
- **Take advantage of a comprehensive** automation and orchestration solution
- **Discover the benefits of a flexible** and scalable architecture that adapts to your organization and IT infrastructure changes

## VISUAL TOM ASSETS

- Design based on **graphical modeling**
- Elaborate planning, **powerful functions to facilitate rule creation**
- Scheduling and Orchestration by easy management of **complex rules, 30% fewer objects**
- Execution **suitable for all types of job**
- Customized control & centralized monitoring of **jobs run**
- Analysis and Reports **adjusted using preset tools**
- **Flexible architecture**, packaged solution ready to use

### DESIGN

- Graphical flow chart modeling
- Multiplatform command language
- Logical and temporal segmentation of operations
  - Go-live management
  - Jobs' templates
- Crontab & scheduled tasks' aided integration
- Graphical changes identification

### SECURITY

- 24/7 multi-environment management
- Multiple architecture: centralized, distributed, combined
- Distinct access and execution profiles
- Backup server, for high availability
- GroupWare interface

### PLANNING

- Unlimited perpetual calendars, natural planning language (SNL)
- Event-based production with dynamic real-time planning
- Optimization of the operation schedule with management by exception

### ANALYSIS & REPORTS

- Customized reporting
- Critical path analysis
- Detailed job dashboards reports, incident statistics
- Forecast/real comparison with explanations for differences

### SCHEDULING

- Inter-server, inter-site, inter-day synchronization
- Intelligent scheduling with point-and-click mode
  - Event-based iterative management

### CENTRALIZED CONTROL AND MONITORING OF JOB ORGANIZATION

- Graphical, chronological, multi-OS real-time control
- Incident management, downgraded paths, relaunch instructions
- Alert emission and monitoring
- Operating instructions extended management, WIKI integration
- Alerts and monitoring of delays with multiple formats
- Web Access

### EXECUTION

- Automatic preparation, management of variables and calculation of dated parameters
  - Dynamic workload balancing
  - Multi-server instantiation
- Integration with more than 150 known software applications



**Visual TOM monitors all major market software applications:** SAP Solutions (Sap NetWeaver Application Server, Sap NetWeaver BW, SAP R/3 Certified MySap.com, SAP R/3 CSP, SAP BO, SAP DS), Oracle Applications, PeopleSoft, Baan, OneWorld, Microsoft Dynamics AX, Dynamics 365, Lawson M3, M3 Cloud...

**Visual TOM manages tools and Cloud resources:** Amazon and Azure Cloud, Docker, Big Data, Web Services, transfers, data bases, email, EAI, ETL, ITSM, backup, frameworks integration...

**Visual TOM is operational with all operating systems:** LINUX, WINDOWS, HP-UX, AIX, SOLARIS, MVS, OS400, Z/OS, OPEN VMS, GCOS8, GCOS7.

# Which benefits for users?

## IT OPERATION MANAGER

- **Guarantee** of a reliable, high-performance service
- **Flexibility faced** with structural and organizational changes
- **Process optimization** thanks to relevant analysis tools (load analysis, critical path analysis ...)
- **Optimized visibility** of the production plan
- **Anticipation** on future load increases, hardware maintenance....
- **Increased efficiency** of the workload service



*The IT Automation manager increases his efficiency by accurately measuring his critical operations scheduled with Visual TOM*

## DESIGNER

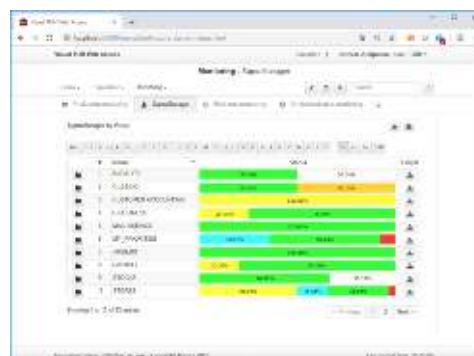
- **Significant reduction** of implementation times
- **Time saving** with simple graphical tools used to draw and create chains
- **Flexibility:** management of all configurations cases, even the most complex, thanks to advanced planning and scheduling functions
- **Easy maintenance** with a structured modelling capability (graphic charts, names codification, documentation and instructions...)
- **Changes securization** with advanced go live management



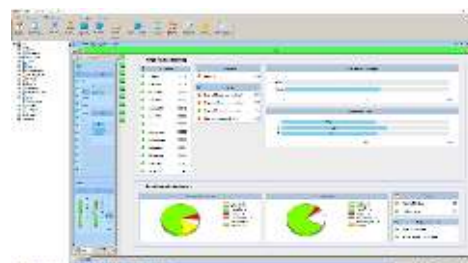
*Using Visual TOM wide range of graphic tools, designers can model job chains in just a few seconds*

## PILOT

- **Clear view** of the production process and access to operational monitoring tools adapted to his needs (graphical control, specific views to each activity sector...)
- **Increased responsiveness** thanks to immediate understanding of blocking points
- **Process optimization**
- **Reduction of errors**
- **Greater autonomy** thanks to direct and immediate access to instructions
- **Improvement of service** and quality expected thanks to job relaunch facilities
- **Reactive management** with Alarms administration



*The Visual TOM Web Access simplifies controlling operations in mobile or remote mode and eases operational users' access to jobs requests*



*With the multi-mode control, the pilot has access to monitoring capabilities that are perfectly suited to his operational context*



## ABSYS: THE EXPERTISE AT THE SERVICE OF THE DSI PERFORMANCE

For more than 30 years, Absyss has been publishing software solutions to support and increase IT Departments' performance. Absyss is a French editor and a pure player, specialized in industrialization, IT automation, orchestration and monitoring of IT operations.

### HIGH ADDED-VALUE SERVICES



#### CONSULTING

Software publisher preconizations adapted to your context



#### IMPLEMENTATION

Implementation services with results commitments



#### OPTIMIZATION

Services guaranteeing investment sustainability



#### EXPERTISE

Consultants coming from IT Infrastructures & production



#### SUPPORT

Reactivity and qualitative technical answers



#### FOLLOW-UP

Knowledge of your context to serve ongoing improvement



#### USERS' CLUB

Active community and unique space for exchanging



#### VERSIONNING

Yearly software evolution based on clients' listening

#### **Absyss**

15-17 Bd du Général de Gaulle  
92120 Montrouge - France  
[www.absyss.com](http://www.absyss.com)  
T : 33 1.40.84.89.01